

180°0'0"E 120°0'0"E 30°0'0"E 20°0'0"E

10°0'0"E

Environment and Climate Change Canada Marine Program Coverage Map

50°0'0"N

40°0'0"N

50°0'0"

40°0'0"

Publish Date: January 2023

Version: MSC Geography Package v6.8.0

Projection: Lambert Conformal Conic

Description: The spatial extent of the areas within Canada referenced in Marine Program alerts.

120°0'0"W

110°0'0"W

100°0'0"W

90°0'0"W

80°0'0"W

70°0'0"W

60°0'0"W



Government
of Canada

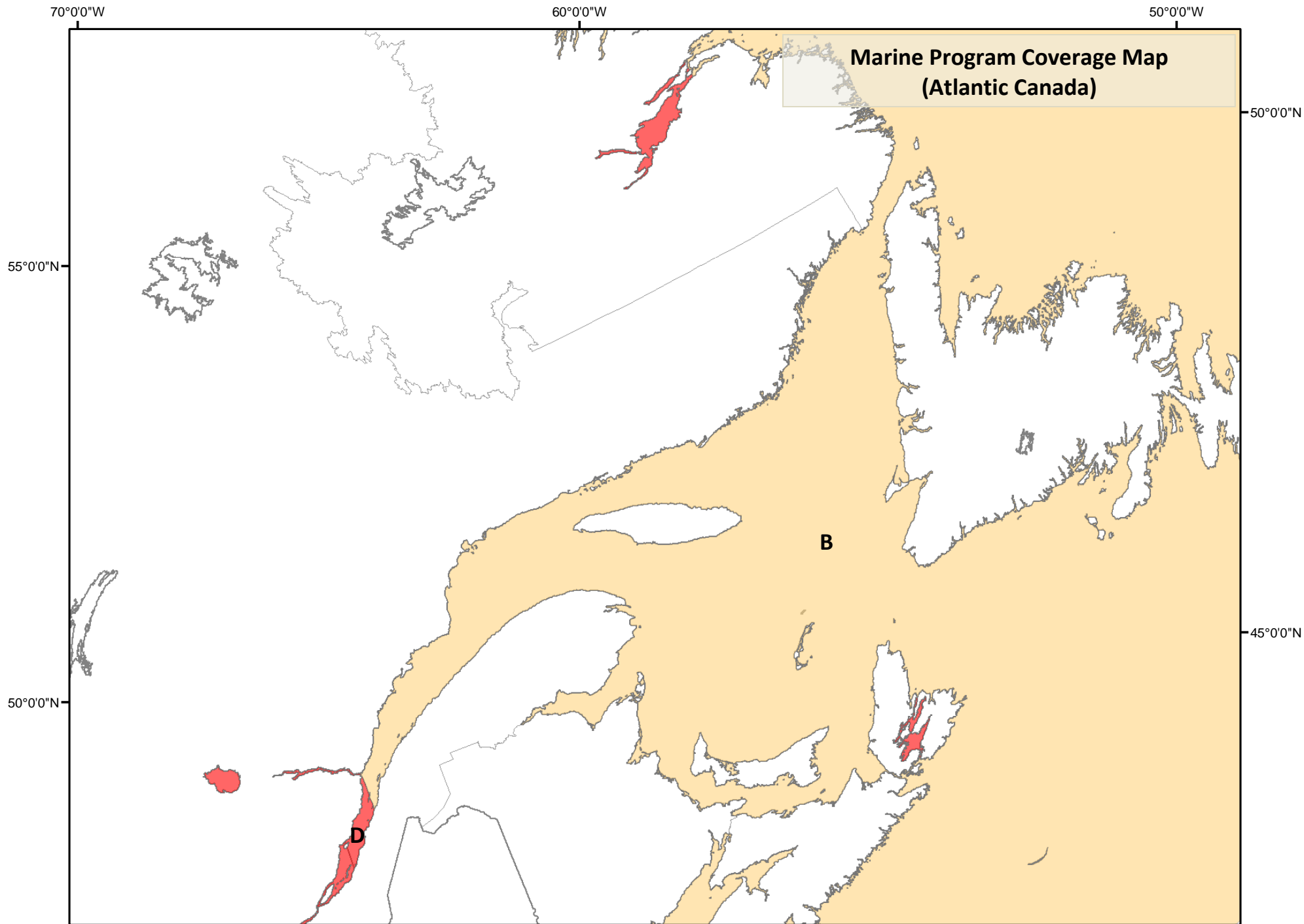
Gouvernement
du Canada

Canada

LEGEND

-  A
Arctic Waters
eaux de l'Arctique
-  B
Atlantic Waters
eaux de l'Atlantique
-  C
Great Lakes
Grands Lacs
-  D
Inland Waters
eaux intérieures
-  E
Pacific Waters
eaux du Pacifique

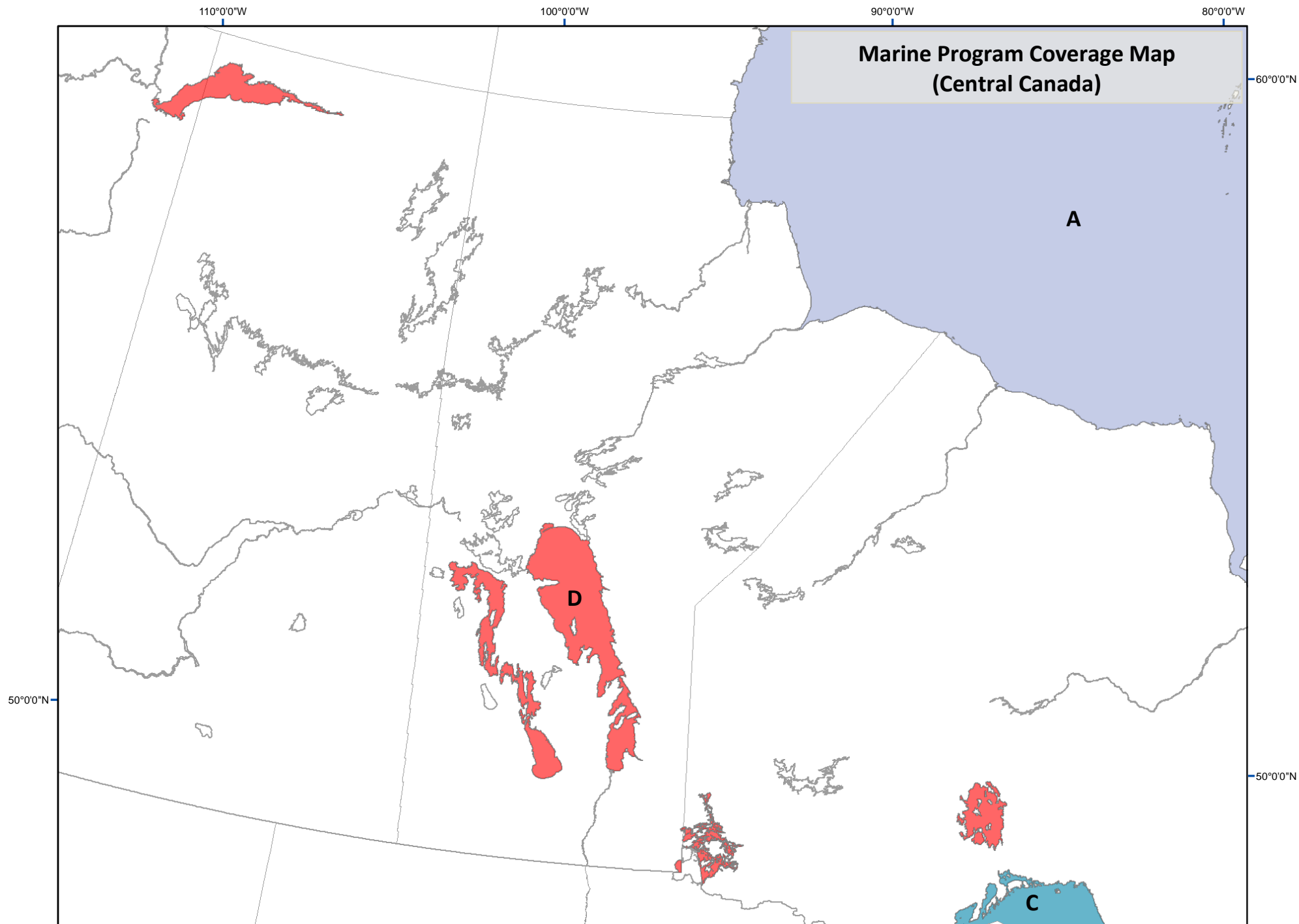




Government
of Canada

Gouvernement
du Canada

Canada



Government
of Canada

Gouvernement
du Canada

Canada

80°0'0"W

**Marine Program Coverage Map
(Southern Ontario & Southern Quebec)**

45°0'0"N

45°0'0"N

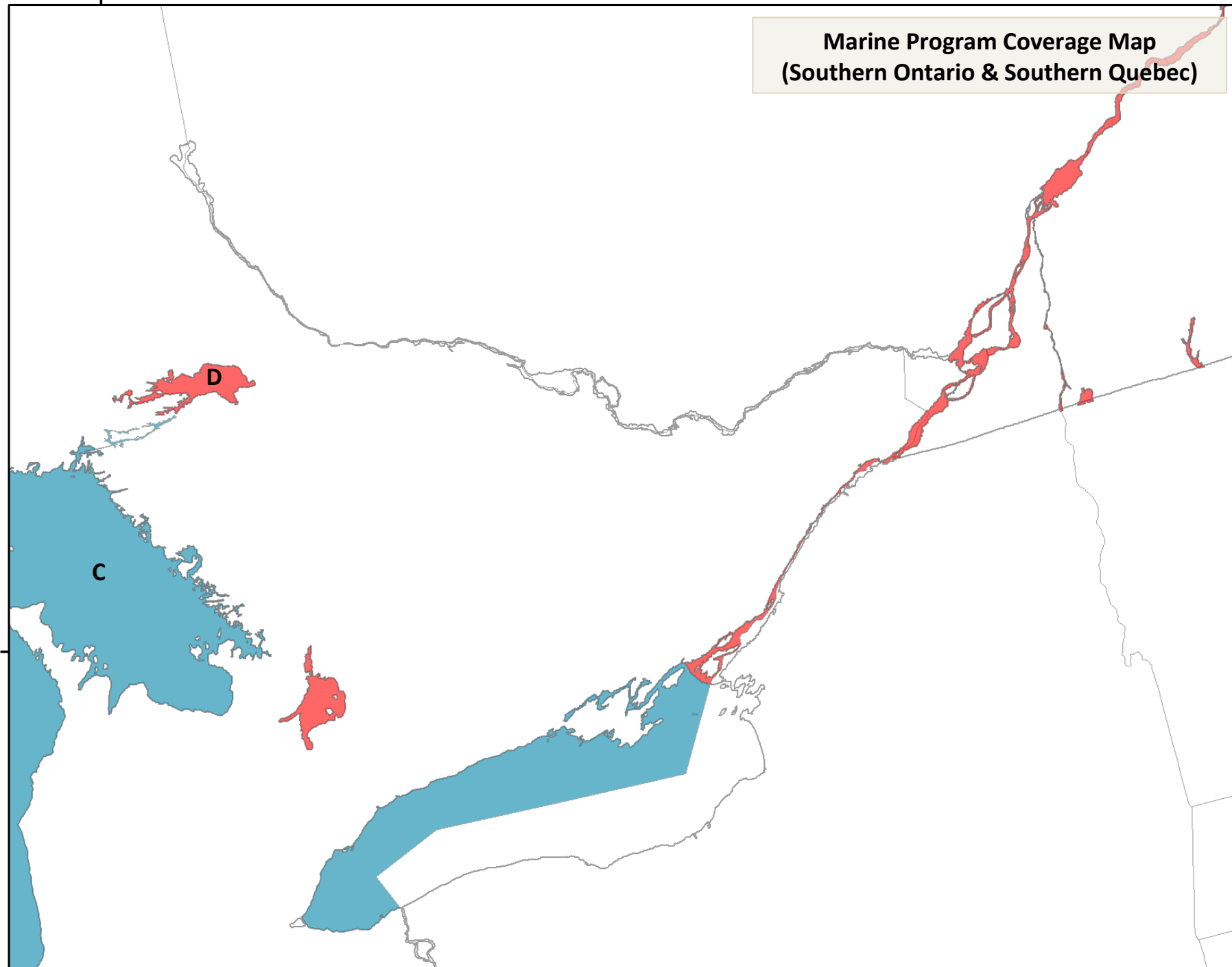
80°0'0"W

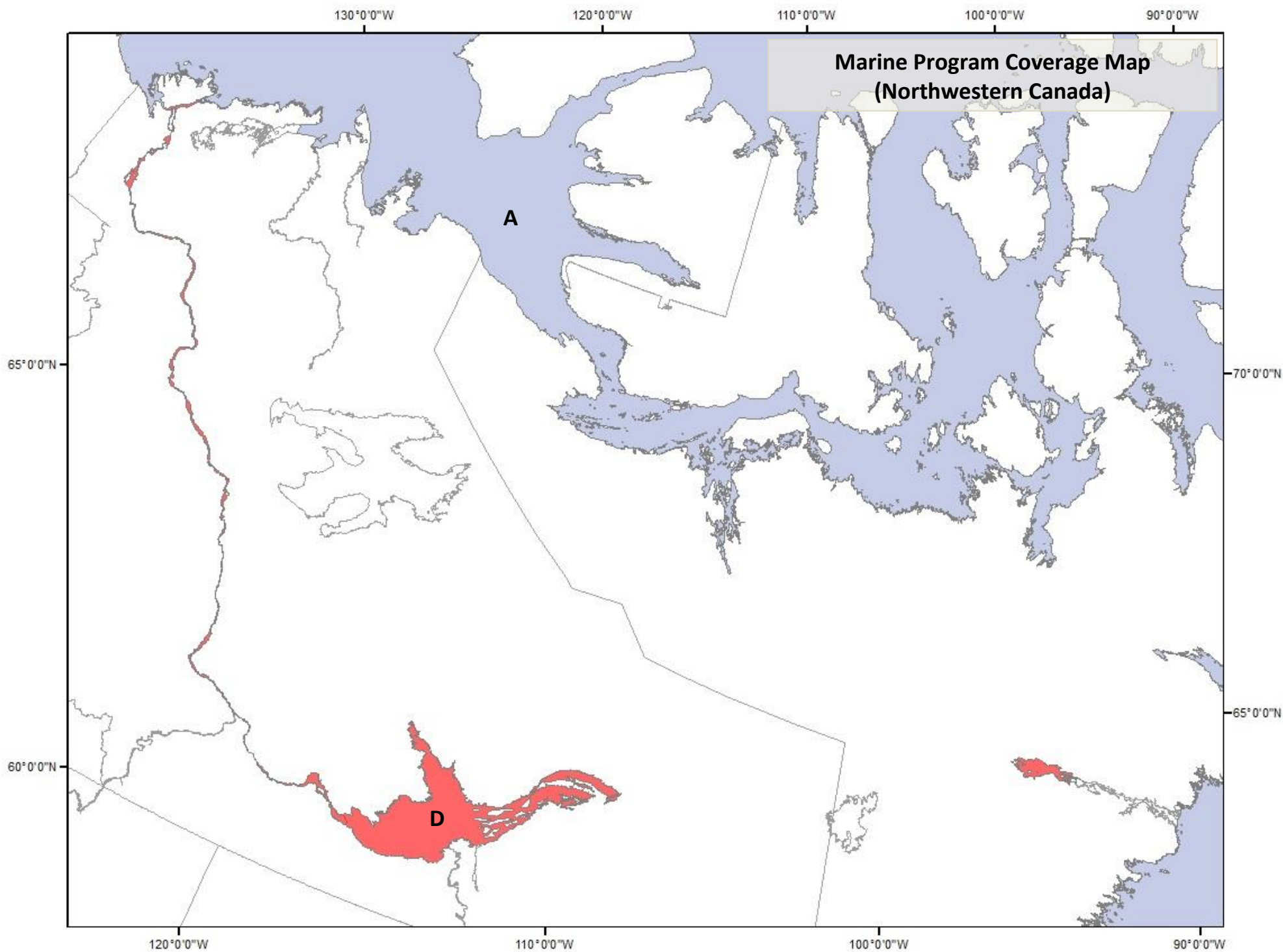


**Government
of Canada**

**Gouvernement
du Canada**

Canada 





Government
of Canada

Gouvernement
du Canada

Canada